

River 504 Rowhomes St. Charles, IL



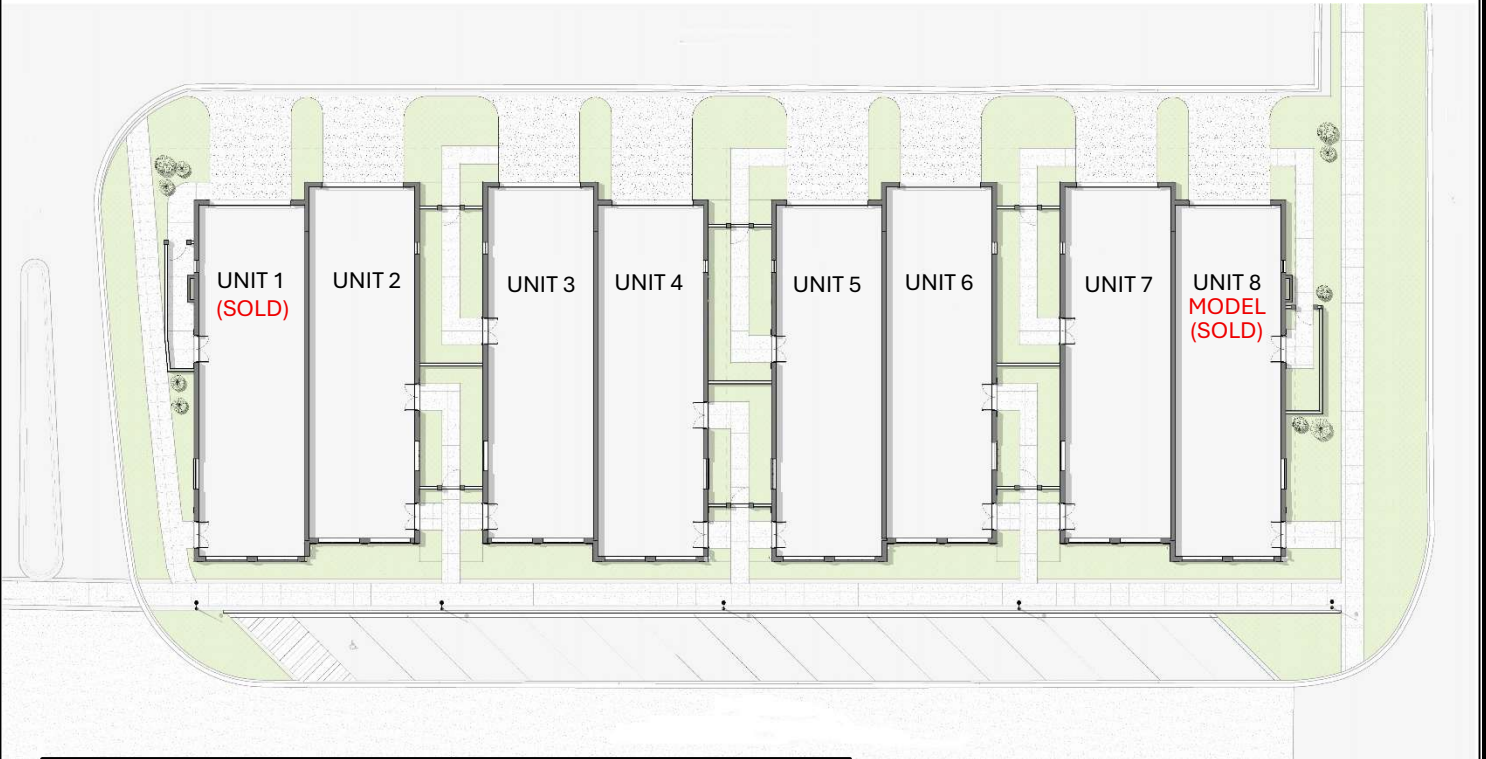
Meticulously designed yet flexible, allowing for modifications to suit your personal taste to provide a sense of tranquility and comfort that welcomes you home.

- In the heart of downtown St. Charles, providing the perfect balance of tranquility and urban vibrancy
- Easy walkable access to nearby dining, parks and shopping
- Four free standing buildings with only two units per building affording ample natural light and private entries
- Over 5,000sf of interior living space with a three-car garage
- Multiple outdoor living spaces including large, private rooftop decks



All information, including prices, square footage, features and amenities and availability is subject to change without notice.

Site Plan



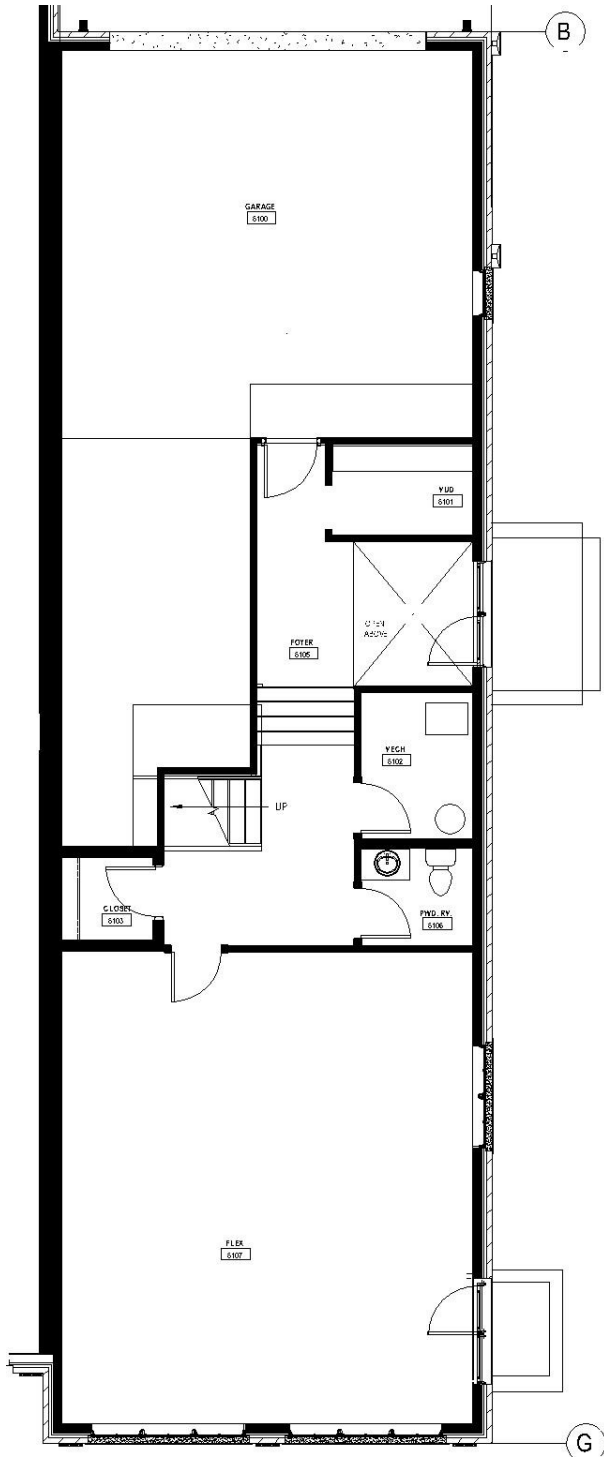
- Convenient carefree living in historic downtown St. Charles
- High quality construction
- Private side courtyard entrances
- Additional 1st Street entrance allows for home business opportunity
- Garage access from Limestone Drive
- Private 2nd and 4th floor rooftop decks

*With over 5,000 sf of interior space,
floor plans can be customized to
better suit your lifestyle*

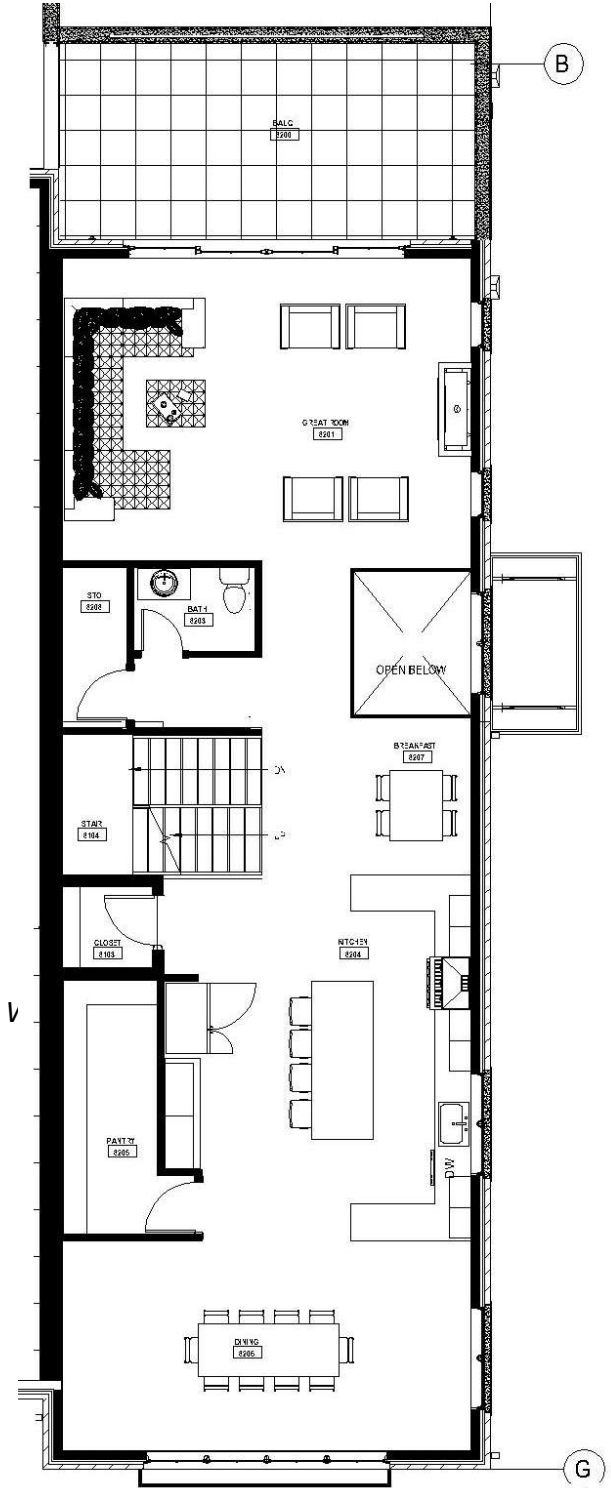


All information, including prices, square footage, features and amenities and availability is subject to change without notice.

Floor Plans—1st and 2nd Levels



1st Level



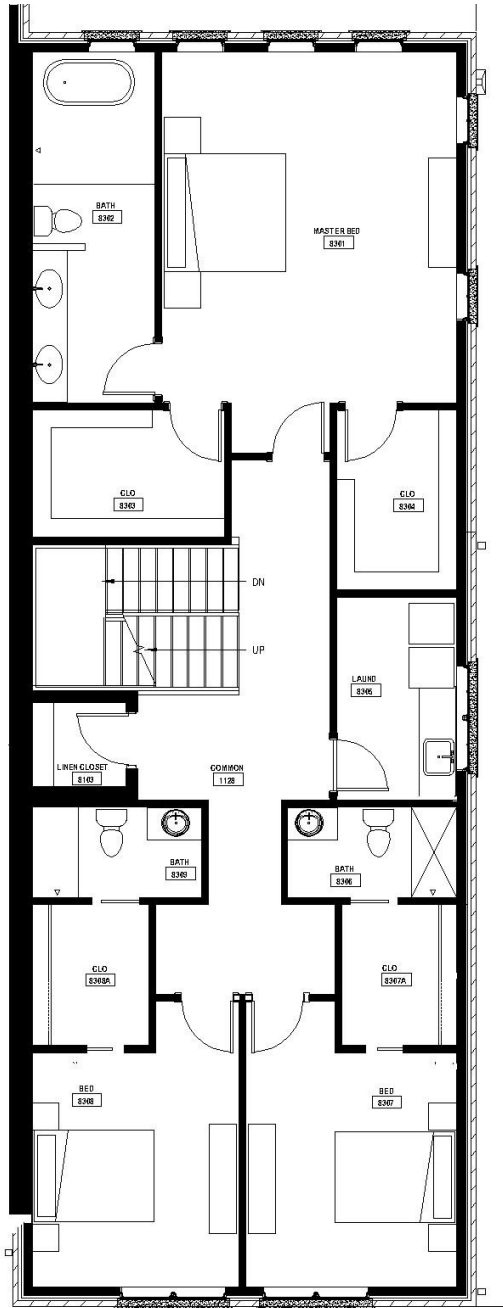
2nd Level

- 10' ceiling heights
- Optional elevator extending from first level to fourth level
- 2 car or 3 tandem car garage options with charging station
- 1st level flex space that can be tailored to meet your lifestyle

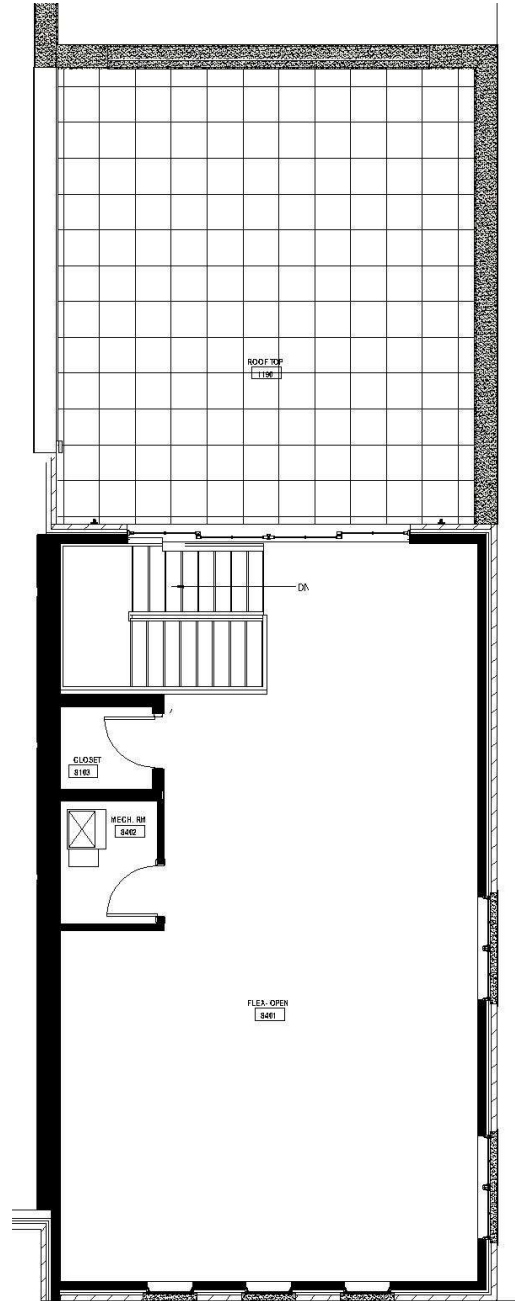


All information, including prices, square footage, features and amenities and availability is subject to change without notice.

Floor Plans—3rd and 4th Levels



3rd Level



4th Level

- 9' ceiling height on 3rd level, vaulted ceiling on the 4th level
- 3 bedrooms and 3 full baths
- 4th level flex space that can be finished to provide additional bedrooms, entertaining or media space
- Large roof top deck

